



S66 W14325 JANESVILLE RD • MUSKEGO WI 53150 • WELS • 414.422.0320 • WWW.STPAULMUSKEGO.ORG

INTENTIONAL
WE LOVE THE SMALL CHURCH
January 23, 24, and 27

“Therefore, encourage one another and build each other up, just as in fact you are doing” (1 Thessalonians 5:11). We believe that life change happens best in community. Therefore, we seek to help singles and couples of all ages find a circle of friends who can encourage, admonish, and support one another. We value the power of community.

FACE MASK PLEASE

In humble service to all in our church community, we are asking all present from age 5 and up to wear a face mask during worship. Face masks are available from the ushers if you are without one. If you are unable to wear a face mask for medical reasons, please do all you can to maintain social distance from others. In Christian love, let us seek to protect the health of others.

BELLS AND WELCOME

HYMN

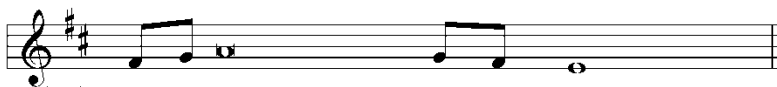
Christ Is Made the Sure Foundation

**Christ is made the sure foundation,
Christ, our head and cornerstone,
Chosen of the Lord and precious,
Binding all the Church in one,
Holy Zion's help forever
And our confidence alone.**

**Grant, we pray, to all your faithful
All the gifts they ask to gain,
What they gain from you forever
With the blessed to retain,
And hereafter in your glory
Evermore with you to reign.**



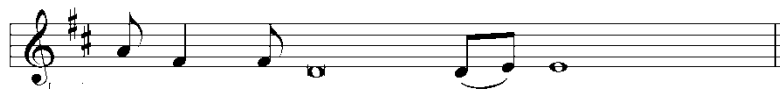
M: O Lord, o - pen my lips.



| C | And my mouth shall de-clare your praise.



L Hasten to save me, O God.



C O Lord, come quickly to help me.



L Give glory to God, our light and our life.



C Come, oh, come, let us wor - ship.



C: Come, oh, come, let us sing to the Lord,



let us shout with joy to our sav - ing Rock;

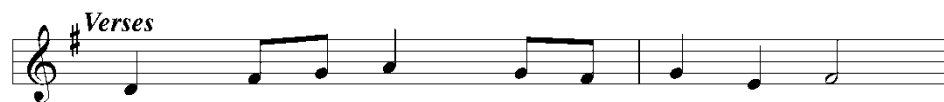


come, en - ter in with our songs of praise,



come, en - ter in with thanks - giv - ing.

Repeat for use with canon



Verses

L: 1. You are a great and a won - drous God,
2. Come, let us wor - ship and, bow - ing low,



cup - ping in your hands all the depths of earth.
kneel be - fore the One who has made us all.



You made the hills and the moun - tains high,
You are the God whom we call our own,



you made the seas and the dry land.
we are the flock that you shep - herd.

to Refrain

PRAYER OF THE DAY

M The peace of the Lord be with you.

C **And also with you.**

M Let us pray.

Heavenly Father, you know us better than we know ourselves. You know how deeply perverse our hearts are. You understand how much your people need each other—both for encouragement and for accountability.

C **Come to us today. Speak to our hearts. Help us see again the beauty of your design for the church and for the spiritual growth of your people in this world.**

M We pray through Jesus Christ. He lives and reigns with you and the Holy Spirit, now

C **and forever. Amen**

FIRST LESSON

Romans 1:8-12

Paul longs to reconnect with his brothers and sisters in Rome so that they may be mutually edified.

First, I thank my God through Jesus Christ for all of you, because your faith is being reported all over the world. ⁹God, whom I serve in my spirit in preaching the gospel of his Son, is my witness how constantly I remember you ¹⁰in my prayers at all times; and I pray that now at last by God's will the way may be opened for me to come to you.

¹¹I long to see you so that I may impart to you some spiritual gift to make you strong— ¹²that is, that you and I may be mutually encouraged by each other's faith.

PSALM OF THE DAY

Psalm 19

Lord, you have the words of everlasting life.

Refrain

Lord, you have the words of
ev - er - last - ing life.

Psalm tone

*

The heavens declare the glory of God;*
the skies proclaim the work of his hands.

Their voice goes out into all the earth,*
their words to the ends of the world.

Refrain

The law of the LORD is perfect,*
giving joy to the heart.

The commands of the LORD are radiant,*
giving light to the eyes.

They are more precious than gold;*
they are sweeter than honey.

By them is your servant taught;*
in keeping them there is great reward.

Refrain

May the words of my mouth and the meditation of my heart*
be pleasing in your sight, O LORD, my Redeemer.

**Glory be to the Father and to the Son*
and to the Holy Spirit,
as it was in the beginning,*
is now, and will be forever. Amen.**

Refrain

GOSPEL

Mark 2:13-17

Throughout much of his ministry, Jesus chose to develop relationships with and spiritually encourage individuals within a small/life group context.

Once again Jesus went out beside the lake. A large crowd came to him, and he began to teach them. ¹⁴ As he walked along, he saw Levi son of Alphaeus sitting at the tax collector's booth. "Follow me," Jesus told him, and Levi got up and followed him.

¹⁵ While Jesus was having dinner at Levi's house, many tax collectors and sinners were eating with him and his disciples, for there were many who followed him. ¹⁶ When the teachers of the law who were Pharisees saw him eating with the sinners and tax collectors, they asked his disciples: "Why does he eat with tax collectors and sinners?"

¹⁷ On hearing this, Jesus said to them, "It is not the healthy who need a doctor, but the sick. I have not come to call the righteous, but sinners."

M This is the Gospel of our Lord.

C **Thanks be to God.**

Your hand, O Lord, in days of old
Was strong to heal and save;
It triumphed o'er disease and death,
All darkness and the grave.
To you they came, the blind, the dumb,
The paralyzed and lame,
The lepers in their misery,
The sick with fevered frame.

Your touch then, Lord, brought life and health,
Gave speech and strength and sight;
And youth renewed and frenzy calmed
Revealed you, Lord of light.
And now, O Lord, be near to bless,
Almighty as before,
In crowded street, by beds of pain,
As by Gennes'ret's shore.

Oh, be our great deliv'rer still,
The Lord of life and death;
Restore and quicken, soothe and bless,
With your life-giving breath.
To hands that work and eyes that see
Give wisdom's healing pow'r
That whole and sick and weak and strong
May praise you evermore.

SERMON

1 Thessalonians 5:11

Pastor Peter Panitzke

Therefore, encourage one another and build each other up, just as in fact you are doing.

[C] Refrain



You are God; we praise you. You are Lord; we ac - claim you.



To you, O Fa-ther ho - ly, all cre - a-tion of - fers praise.



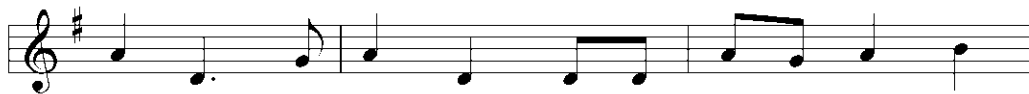
- Verses*
1. With the an - gels in heav - en,
 2. Cre - a - tor of all things, **We praise you, we**
 3. O Christ, King of glo - ry,



praise you! With the cher - u - bim and ser - a-phim,
O Je - sus Christ, the Son of God, **We**
You be - came a man to set us free;



praise you, we praise you! With a - pos - tles and proph - ets,
O Spir - it, most ho - ly, **We**
You have ris - en to free us;

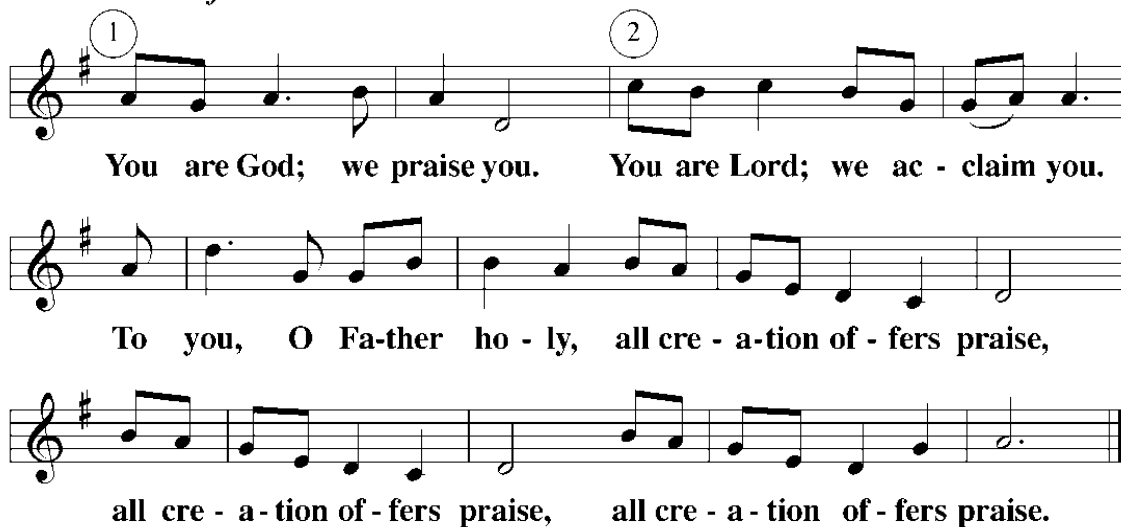


praise you, we praise you! With the mar - tyrs and your
To the Trin - i - ty most
And with all your saints in



ho - ly Church,
bless - ed, **We sing in end - less** *to Refrain*
glo - ry, **praise!** *to Refrain*
to Final Refrain

Final Refrain



1 2

You are God; we praise you. You are Lord; we ac - claim you.

To you, O Fa-ther ho - ly, all cre - a-tion of - fers praise,

all cre - a-tion of - fers praise, all cre - a-tion of - fers praise.

© 1997 GIA Publications, Inc. All rights reserved.

PRAYER OF THE CHURCH

- M Lord God, our maker and preserver, we praise and thank you for all that you give us day after day.
- C **We are not worthy of all the mercies you show us.**
- M You have given us your precious Word to nourish our souls and to protect us from the temptations of the devil, the world, and our sinful nature.
- C **We thank you for those who teach and preach your saving truth at this place and everywhere. Grant them a rich measure of patience, wisdom, and love.**
- M Heavenly Father, we pray that you shield us from every kind of danger: sudden catastrophe, terrors of crime, and the pain of disease. Watch over those who travel by land, sea, and air. Keep our loved ones from whatever perils may threaten them.
- C **Heal those who are sick, cheer those who are sad, calm those who are distressed, and comfort all who are old and infirm.**
- M Bless our land, our people, and those who hold offices of high trust. Keep our government and schools upright and strong for the advancement of good citizenship and useful vocations, that we may enjoy your gifts of peace, security, and well-being.
- C **Grant your blessing to every nation on earth. Where there are wars, may there be peace. Where there is hatred, let it be healed. Where there is poverty, danger, or disaster, come with your almighty power to help and restore.**

Special prayers and intercessions.

- M Hear us, Lord, as we bring you our private petitions.

Silent prayer.

- M We bring these requests before you in the name of Jesus our Lord, and ask you to hear us. Take all that we have, our bodies and minds, our time and skills, our ministries and offerings, and use them to your glory.
- C **We give ourselves to you that we may serve you in whatever way is pleasing in your sight. Amen.**

LORD'S PRAYER

Our Father in heaven, hallowed be your name, your kingdom come, your will be done on earth as in heaven. Give us today our daily bread. Forgive us our sins, as we forgive those who sin against us. Lead us not into temptation, but deliver us from evil. For the kingdom, the power, and the glory are yours now and forever. Amen.

HYMN

O Master of the Loving Heart

O Master of the loving heart,
The friend of all in need,
We pray that we may be like you
In thought and word and deed.

Your days were full of kindly acts;
Your speech was true and plain;
Of those who ever sought you, Lord,
None came to you in vain.

Your face was warm with sympathy;
Your hand God's strength revealed;
Who saw your face or felt your touch
Were comforted and healed.

Oh, grant us hearts like yours, dear Lord,
So joyous, free and true,
That all your children, ev'rywhere,
Be drawn by us to you.

CLOSING PRAYER

- M O Lord, we thank you for the blessing of gathering around your life-changing Word. Take the truths we have heard today and plant them deep within our hearts. Shape us into faithful followers of Jesus whose thoughts, attitudes, and actions are obedient to your holy will and reflect your gracious love. Let us rejoice in the privileged blessing of being children of the Light.
- C **As we follow the light of Jesus, help us to light the way for many. We look forward to the day when we all gather around your throne in heaven. Amen.**

BLESSING



ANNOUNCEMENTS

LUTHERAN WOMEN'S MISSIONARY SOCIETY JANUARY SPOTLIGHT

Greetings from Pastor Ryan Heiman in sunny Sahuarita, Arizona. I've been serving as missionary at Grace Lutheran Church since 2016. When I arrived at Sahuarita, we did community surveys which helped us formulate a mission strategy to build a new church and child learning center to spread the gospel.

Students from Wisconsin Lutheran College and St Croix Lutheran High School helped our mission through the "Mission Journeys" program. The members of Grace provided lodging, food, and mission work to anyone who is willing to come to Arizona during the winter. These students spend their winter or spring break going door to door on behalf of our growing congregation. This small mission partnership allowed us to knock on 6000 doors in town. It's a blessing to have these young people in our synod to spread the joy from other parts of the country doing God's work.

For more information contact St. Paul's LWMS Reporter Nadine Steger at gsteger1@gmail.com or visit www.gracelutheranaz.org or www.lwms.org.

WEEKLY CALENDAR

For the week of January 25, 2021

MON	10:00 am	Walking Club (Main Church)
TUE	10:00 am	Walking Club (Main Church)
	4:30 pm	Public School Confirmation Classes
	6:00 pm	Divorce Care (School Classroom 8)
	7:00 pm	<i>Following the Promise Bible Study (Online)</i>
WED	6:30 am	Sunrise Bible Study (Faith Room)
	7:00 pm	Traditional Worship Service
THURS	10:00 am	Walking Club (Main Church)
	6:30 pm	Pickleball (Trinity Gym)
	7:00 pm	Study of Revelation (online)
SAT	8:00 am	Men's Breakfast Bible Study (Grace Room)
	5:00 pm	Traditional Worship Service with Holy Communion
SUN	7:45 am	Traditional Worship Service with Holy Communion
	9:15 am	Traditional Worship Service with Holy Communion
	9:15 am	Kids Club
	9:45 am	The Bridge Communion
	10:15 am	The Bridge
	10:45 am	Traditional Worship Service with Holy Communion

CONNECTION CARD COMPLETION

Thank you for faithfully completing the Connection Card each week. Please do not complete the card in the church lobby. Instead, take them into the service and complete them. This will allow for a smoother traffic flow in the lobby.

CHICKEN DINNER

Due to COVID-19 we will not have the annual chicken dinner in February. As it is a fellowship event, the committee has decided not to try and do a "take-out only" or something similar. We look forward to a time when we can see everyone. If you have questions, please call Jim Ross at 414-425-7119.



Our vision is that by every possible means we bring every person in our area of influence closer to Christ through regular worship, small groups, and serving together.

ST. PAUL'S NEWS

HOSPITALIZED

Brittany Michaels (Duke Hospital in Durham, North Carolina), Bill Raduege (St. Luke's), and Dorrette Probst (home hospice care). Savannah Sievert and Laura Walz have been discharged from the hospital.

ATTENDANCE

The following attended last weekend's services: 42 on Saturday, 78 on Sunday 7:45 am, 114 on Sunday 9:15 am, 150 at The Bridge, 54 on Sunday 10:45 am, and 20 on Wednesday.

FOLLOWING THE PROMISE BIBLE CLASS

Pastor Nate Strobel is leading a new session of our new member Bible study—*Following the Promise*—on Tuesdays at 7:00 pm – online only. If you miss a class, watch it later on YouTube. Enjoy camaraderie with Pastor Nate while you learn the basics of what the Bible teaches. You will track the promises of the Savior from the Garden of Eden down to your own heart and life. Someone who recently finished the class said, "I am thankful to Pastor Strobel for teaching me the doctrines of Scripture in the *Following the Promise* class. I love the friendliness of St. Paul's."

ONLINE STUDY OF REVELATION

The next Revelation Study with Pastor Pete is this Thursday, January 28 at 7:00 pm. Register your interest on the Connection Card or email him at ppanitzke@stpaulmuskego.org.

DIVORCARE

If you have experienced or are experiencing the pain of divorce, please come and find hope and healing in Jesus. *DivorcCare* meets Tuesday evenings from 6:00-7:30 in the school building, Room #8. For more information visit divorcCare.org or contact Kristen Miller at kmiller@stpmuskego.org or (414) 422-0320, ext. 130.

PUBLIC SCHOOL CONFIRMATION IN FALL

Families with children entering grade 6 in public schools this fall, are asked to contact Dr. Nelson at (414) 422-0320, ext. 145, or jnelson@stpaulmuskego.org to get signed up for confirmation instruction 2021-2022 or to obtain information. St. Paul's confirmation instruction is a 3 year/3 level program.

TEXT TO GIVE UPDATE

We have a new 'Text to Give' process. Send a text message "stpmuskego" to: **77977**. Within a few minutes you'll be sent a text with a link to register. Click the link and enter your information. For future giving, send a text message "stpmuskego" to: **77977**, and it will take you to your already set-up profile.

ST. PAUL'S EVENT STAFF OPENINGS

The outreach team is looking to add 1-2 people part-time to our event staff team to help supervise events held on campus. If you enjoy making guests feel welcome, you are encouraged to inquire about more details at facilityrentals@stpaulmuskego.org. This is a flexible paid position with approximately 6 hours per week on weekdays (5:00 pm-10:00 pm), possible weekends, and some days in the summer. Applicants must be 18 years old or older.

DIVINE CALLS RECEIVED

St. Paul's School Administrator Mr. Seth Fitzsimmons has received a divine call to St. Peter Lutheran Church and School in Appleton to serve as principal beginning in the 2021-22 school year. St. Paul's School Spanish teacher Mrs. Kristen Miller has received a divine call to St. Peter Lutheran Church and School in Appleton to serve as principal beginning in the 2021-22 school year. Please keep Seth and Kristen in your prayers as they prayerfully consider their ministry.

ST. PAUL'S LUTHERAN SCHOOL NEWS

HELPING TO BUILD CHRISTIAN FAMILIES

Have you considered a Christian education for your child? Registration for the 2020-2021 school year has begun for our 3K through grade 8 Lutheran school.

St. Paul's participates in the Milwaukee and Wisconsin Parental School Choice programs. Income eligibility is listed below. Our congregation also provides over \$600,000 in tuition assistance each year. Don't let financial concerns keep you from exploring this opportunity to help your child grow in faith.

Schedule a tour with our Principal Seth Fitzsimmons at (414) 422-0320, ext. 118, or sfitzsimmons@stpaulmuskego.org as soon as possible or attend the open house on January 31.

LUTHERAN PREK AND ELEMENTARY/MIDDLE SCHOOL OPEN HOUSE JANUARY 31

January and February are the months where many families are interested in learning more about a school for their child. Whether this is for 3K, 4K, Kindergarten or transferring into 1st – 8th grade, all are welcome. Do you know someone like this? If so, invite them to our open house on Sunday, January 31, 1:00-3:00 pm. I would love to talk to them about our schools. For COVID precautions, a sign-up for a time slot will be posted to the school website (www.stpmuskego.org) soon. We will have 5 families per time slot. You may also contact me at sfitzsimmons@stpaulmuskego.org or (414) 422-0320, ext. 118, to set up a visit.

2021-2022 Income Limits for the Wisconsin Parental Choice Program (WPCP)

Family Size	Single Parent Income Limit	Married Parents Income Limit
2	\$37,928	N/A
3	\$47,784	\$54,784
4	\$57,640	\$64,640
5	\$67,496	\$74,496
6	\$77,352	\$84,352
***Add \$9,856 for each additional family member		

2021-2022 Income Limits for the Milwaukee Parental Choice Program (MPCP)

Family Size	Single Parent Income Limit	Married Parents Income Limit
2	\$51,720	N/A
3	\$65,160	\$72,160
4	\$78,600	\$85,600
5	\$92,040	\$99,040
6	\$105,480	\$112,480
***Add \$13,440 for each additional family member		

ST. PAUL'S CHILD CARE CENTER IS HIRING

Do you know someone who would be a great fit to join our child care center staff? We have two openings: (1) M-Th 12:30-6:00 pm and (2) M-F 12:30-6:00 pm. Both are aide positions, assisting our awesome lead teachers. Some benefits are included. Please contact Tammy Dockter at (414) 422-0320, ext. 200, or dockterta@stpmuskego.org to indicate interest.

ST. PAUL'S CHILD CARE CENTER INFANT AND TODDLER OPENINGS

Our Child Care Center currently has openings in both the infant and toddler rooms. Please contact Tammy Dockter to schedule a tour and for more information at (414) 422-0320, ext. 200, or dockterta@stpmuskego.org.

OUR MESSAGE SERIES

THE INTENTIONAL LIFE

In the days of the old sailing ships, the greatest danger sailors faced was not piracy or storms at sea, but simply being “becalmed” hundreds of miles from land.

The word “becalmed” sounds peaceful, but with no wind, a sailing ship could drift aimlessly for days or weeks until the sailors perished from lack of food and water.

In our lives, our most dangerous enemy may be not some sudden temptation, demonic assault, or even the personal “storms” of life, but the danger of simply drifting. The author of the Book of Hebrews warned, “We must pay the most careful attention, therefore, to what we have heard, so that we do not drift away” (Hebrews 2:1).



Are you drifting?

As we begin the new year, we pray that the Holy Spirit (in both Hebrew and Greek the word for “spirit” and “wind” is the same) fill the sails of our lives so that we live with purpose and intention.

Join us as we seek *The Intentional Life of Love*:

January 31	Love within Families	Joshua 25:15
February 7	Love Generously	Matthew 6:21
February 14	Love to God’s Glory	1 Corinthians 10:31

LIGHTHOUSE YOUTH CENTER (NON) BOWLING ONLINE FUNDRAISER

The 2021 Annual 9-Pin Tap Bowling Fundraiser for the Lighthouse Youth Center located in urban Milwaukee, will be held online this year due to COVID 19. It is so vital that we provide youth with the resources and opportunities to continue with their education, along with constant Christian mentoring and support.

In keeping with the fun that is always present at our live events, we are happy to announce that all donations received during this time will be entered into a drawing for different gift cards or certificates from our loyal business partners. Your entire donation is tax deductible.

Donate online at <https://www.lighthouseyouthcenter.com/donate>. To designate your donation for this event, enter the word BOWLING after your last name (ex. Smith – BOWLING). Please include your email address, then add your payment information. You will receive a confirmation of your donation.

You can donate anytime throughout the year, but to highlight the month of January as our Bowling Fundraising Month, we are ending this fundraiser on January 24, 2021, the day the live event would have been held. If you would rather send a check, make it out to Lighthouse Youth Center and designate “Bowling” on the memo line. Mail to Lighthouse Youth Center, 2475 W. Roosevelt Dr., Milwaukee, WI 53209.

ARE YOU RESILIENT?

We will all fall. In Christ, we can rise in confidence to serve him again today. There are tools that can help us claim that truth.

Have you ever wondered how some people recover from crisis so well? Do you wish you could do the same?

This three-week, faith-fueled, resilience system training class will give you the resources to build your resilience. Each week, you will learn new skills to help you overcome challenges and grow in your faith. We will cover two modules each week. A summary of each module is below.

The course will begin on Thursday, January 28, with classes being held for three consecutive Thursdays, **6:00-8:00 pm**, in the sanctuary. Register on the Connection Card or online at StPaulMuskego.org/experience/counseling-care-center/.

You can learn more about *CORNERSTONE* by contacting Emily Krill at 262-510-8109 or ejkrill@gmail.com.



MODULE 1: RESILIENCE

Resilience is the idea that individuals can be built up in such a way that they will “bounce back” from difficulty. Those with higher resilience would recover better than those with lower resilience. There are many views of this concept, but the overall common theme include some basic elements, the particular viewpoint of the individual, and some protective factors instilled through learning. Resilience is not inherited – it is grown. No matter how resilient you may feel today, you can and will improve when pay attention and make a plan!

MODULE 2: CRISIS SURVIVAL

Sometimes there are moments in life that cannot be corrected—they are just difficult. The best one can hope for is to get through them with grace and avoid more damage. Being able to know when to do that and how to accomplish it is crucial. Use the right tool for the right problem. If you determine you are experiencing a crisis – don't panic. Learn how to survive.

MODULE 3: REALITY ACCEPTANCE

There are times when something enters our lives and becomes a permanent problem. Some difficulties need to be fully and totally accepted. Reality acceptance is the way to lower pain and suffering. There is freedom, release, and peace knowing that everything in your life is meant to be there.

MODULE 4: MINDFULNESS

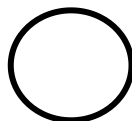
Mindfulness will be studied through six specific skills that help individuals delve into the world around them in the most honest and complete way. This type of mindfulness is helpful in dealing with reality and eliminating additional items that might confound the thoughts or complicate the emotions. Mindfulness is difficult but everyone can work at it!

MODULE 5: EMOTION REGULATION

This is the skill of determining how to interact with emotions as they come. While it might seem that our emotions are controlling how we behave, emotion regulation is the way to set it up so that there is always a choice. Emotions can be very powerful things. In order to get this skill to work, we have to keep at it and reverse the emotional circle to be more in control.

MODULE 6: THOUGHT DISTORTIONS

Thought distortions are particular ways of thinking in which people often become stuck, but which are actually untruthful. Living this way can be very difficult for them and others. Learning to catch these distortions and rephrase them can have enormous positive impact on the situations and outcomes.



GroupWork

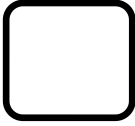
Bible Study Discussion Starters

Life application materials for use in small group Bible study and home devotions, and personal use..

1. **Celebrate:** What benefits have you experienced as part of a small group?
2. **Small Group Evaluation:** A small group allows you to do the “one another’s” of the Bible. Read each passage below. What are we to do for one another? How does your small group carry out these “one another’s”?

- John 13:34-35 l _____
- Romans 12:10 h _____
- Romans 15:7 a _____
- Romans 15:14 i _____
- 2 Corinthians 13:11 e _____
- Galatians 5:13 c _____
- Ephesians 4:32 k _____
- Ephesians 5:19 s _____
- Ephesians 5:21 s _____
- Hebrews 10:24-25 s _____
- James 5:16 c _____
and p _____
- 1 Peter 4:9 offer h _____

3. **Share:** Who do you know in the congregation or in your area of influence that could benefit from what you are experiencing in the small group? Share names and discuss whom you might invite. If your group is already too big, is it time to split so more people can benefit?
4. **Pray** that no one in the St. Paul’s family goes through life alone.



NoteSheet

Sermon Outline

Take notes during the sermon to help you remember the main points.

Live the Intentional Life: Love the Small Church

*Therefore encourage one another and build each other up,
just as in fact you are doing (1 Thessalonians 5:11).*

1. The perfect time for “the small church” (1 Th 5)

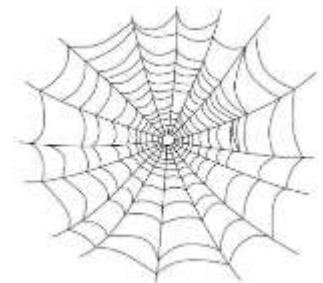
- a. Today’s challenges
- b. Today’s solution

2. The perfect people for “the small church (Ro 15:14)

- a. Competent
- b. Empty

3. The perfect beauty of “the small church”

- a. Messy
- b. Interconnected



My Next Steps

- **Check the time:** Read Matthew 24:4-14. What do you see in the world around you that says that Jesus could come back at any time? How does that increase the importance of connecting spiritually with the people around you?
- **Grow in competence:** The Holy Spirit works through the Word. Begin or continue a plan to read/listen to God’s Word daily. A copy of the daily reading plan Pastor Pete is using is at the Welcome Center. There are variety of free devotions for individuals, families, teens and member of the military available at WELS.net/serving-you/devotions or at TimeofGrace.org.
- **Make a commitment:** Check the connection card that you are interested in being a part of a small group. If you are already part of a small group, let us know if you have room for more.